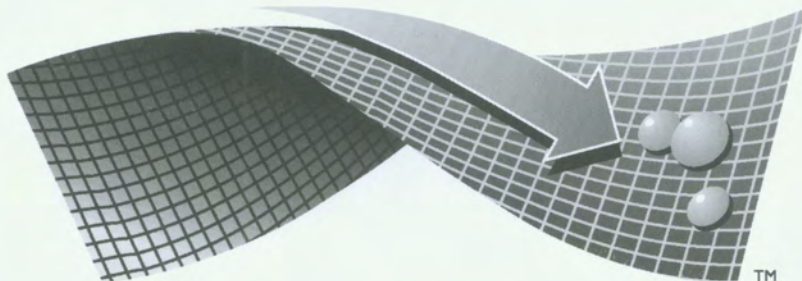


Nano-Perfection I

Ultimate Fabric Performance Protection

Douglass

MINIMIZES STAINS
LIQUID REPELLANT



nano~pel
A NANO-TEX INNOVATION



Ouja Bamboo



Sparkler Lapis



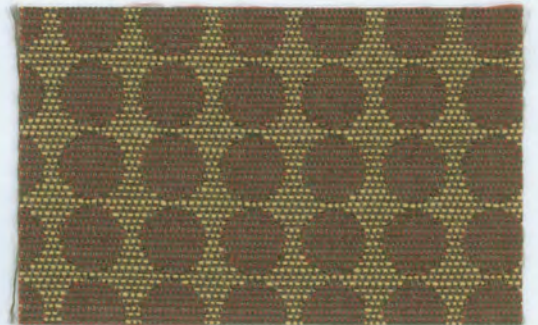
Stratego Blue Velvet



Scrabble Cobalt



Jenga Indigo



Bingo Cinnamon



Clue Navy



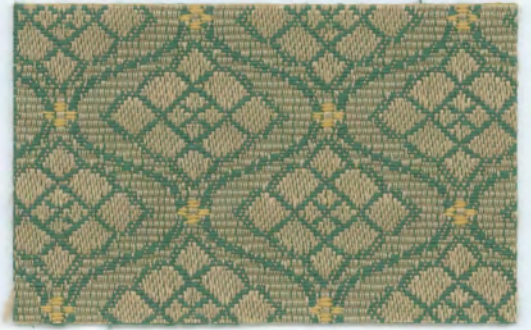
Ouja Kohl



Stratego Sunflower



Jenga Glo



Ouija Rattan



Clue Citrus



Bingo Pesto



Scrabble Sagebrush



Monopoly Fern



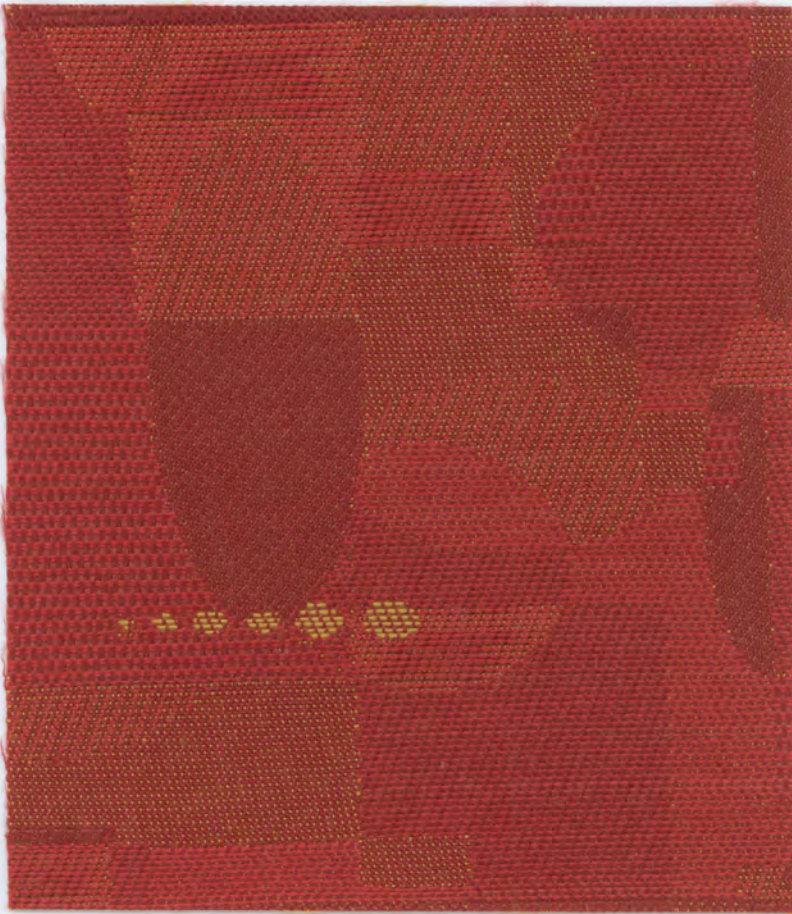
Trivia Dark Olive



Clue Spice



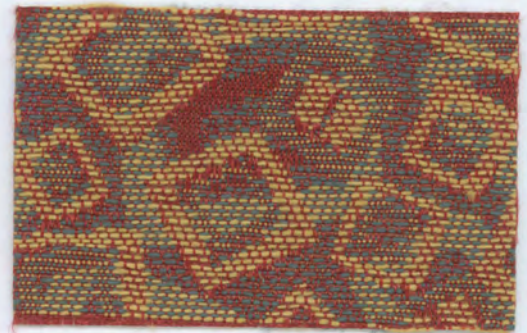
Bingo Copper



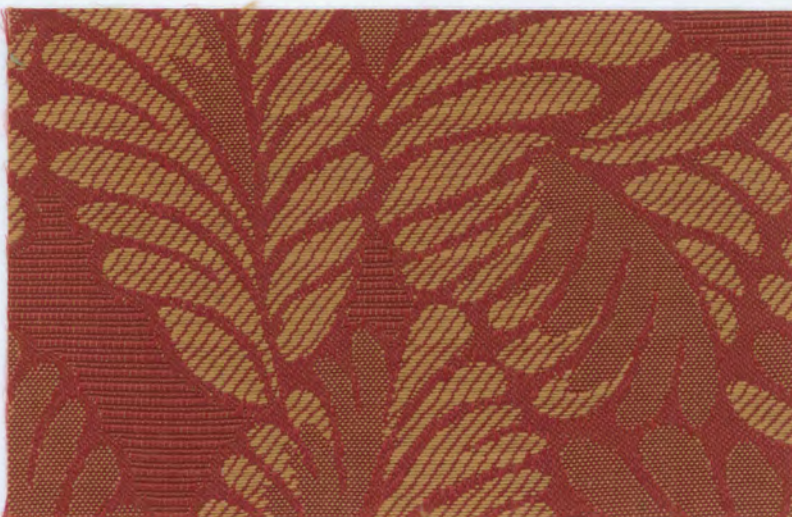
Risk Red



Sparkler Flame



Scrabble Geranium



Monopoly Ruby



Trivia Passion



Jenga Maroon

Nano-Perfection I Ultimate Fabric Performance Protection

Pattern	Content	Weight	Abrasion ASTM D-3597 Cotton Duck	Lightfastness AATCC-16E-1998	Seam Slippage ASTM D4034	Tensile Strength ASTM D5034	Repeat
Bingo	85% Polyester 15% Rayon	7.5 oz. per linear yard	50,000 Double Rubs	Class 5 at 40 hours	W - 39 lbs F - 40 lbs	W - 150 lbs F - 107 lbs	2" H x 2" V
Clue	100% Polyester	8.5 oz. per linear yard	50,000 Double Rubs	Class 5 at 40 hours	W - 44 lbs F - 60 lbs	W - 150 lbs F - 150 lbs	4" H x 4" V
Jenga	60% Polyester 40% Rayon	13 oz. per linear yard	50,000 Double Rubs	Class 4 at 40 hours	W - 72 lbs F - 100 lbs	W - 150 lbs F - 56 lbs	2" H x 2" V
Monopoly	54% Rayon 46% Polyester	10 oz. per linear yard	50,000 Double Rubs	Class 5 at 40 hours	W - 65 lbs F - 75 lbs	W - 150 lbs F - 117 lbs	2" H x 2" V
Ouija	52% Polyester 42% Cotton 6% Rayon	11 oz. per linear yard	50,000 Double Rubs	Class 5 at 40 hours	W - 44 lbs F - 52 lbs	W - 150 lbs F - 56 lbs	2" H x 2" V
Risk	58% Rayon 42% Polyester	11 oz. per linear yard	50,000 Double Rubs	Class 5 at 40 hours	W - 63 lbs F - 78 lbs	W - 150 lbs F - 110 lbs	12.5" H x 12.5" V
Scrabble	52% Rayon 48% Polyester	12 oz. per linear yard	50,000 Double Rubs	Class 4.5 at 40 hours	W - 50 lbs F - 45 lbs	W - 150 lbs F - 97 lbs	4" H x 4" V
Sparkler	58% Polyester 42% Rayon	9 oz. per linear yard	50,000 Double Rubs	Class 5 at 40 hours	W - 75 lbs F - 60 lbs	W - 150 lbs F - 75 lbs	4" H x 4" V
Stratego	60% Polyester 40% Rayon	9 oz. per linear yard	50,000 Double Rubs	Class 5 at 40 hours	W - 72 lbs F - 35 lbs	W - 150 lbs F - 64 lbs	12.5" H x 12.5" V
Trivia	100% Polyester	8 oz. per linear yard	50,000 Double Rubs	Class 4 at 40 hours	W - 37 lbs F - 74 lbs	W - 150 lbs F - 150 lbs	2" H x 2" V

Width: 54"

Flame Resistance: passes Cal 117 Section E Class I

Normal Care instructions For NANO-PEL™ enhanced fabrics

Spills and stains should be removed from fabrics as soon as possible. While staining may be minimized on NANO-PEL enhanced fabrics, cleaning may still be necessary. If spills are removed immediately, there will be minimal to no staining on the fabric. If spills go unnoticed for a period of time and staining occurs, the NANO-PEL enhanced fabrics will clean easily and quickly with proper cleaning procedures.

- clean liquid spills quickly with a dry clean cloth.
 - for liquid spills, gently blot (don't rub) spill immediately with an absorbent cloth while spill is still fresh.
 - wipe off with clean water and a dry clean cloth if needed.
- for semi solids, try to lift the spot off of the fabric.
 - working in a circular motion or removing the spill from the side is often the best means to lift spills from the fabric.
 - change towel surface frequently until spot has been transferred off of the fabric and onto the absorbent cleaning cloth.
(Try to avoid pressing the spill or spreading the stain)
 - wipe off with clean water and a dry clean cloth.
- for stubborn spills:
 - if a spill does not come off with water and a dry clean cloth, add a mild detergent mixed with water and repeat circular motion.
(Mild detergents such as Sport Wash, Tide Free, Cheer Free)
 - wipe off with water and a dry clean cloth.
(Do not rub harshly. The harder you rub when cleaning a spill, the deeper the soil can penetrate between the fibers.)
 - remove all soap residue from the surface with clean water. If thorough rinsing does not occur, re-soiling of the affected area can occur.

- Note:**
- if the wrong type of cleaner is used, the fabric could be permanently damaged.
 - some stains may require a second cleaning to achieve satisfactory results.
 - if there is detergent residue causing re-soiling, remove it using a hot water extraction method using clear water.

Douglass

Douglass Industries, Inc., 412 Boston Avenue, P.O. Box 701, Egg Harbor, NJ 08215

Sample Hotline: 800-950-3634 (24 hours)
 Sample fax line: 609-804-0774
 Samples e-mail: samples@dougind.com
 Main: 609-965-6030

Customer Service phone: 800-950-3684
 Customer Service fax line: 609-965-7271
 Customer Service e-mail: service@dougind.com