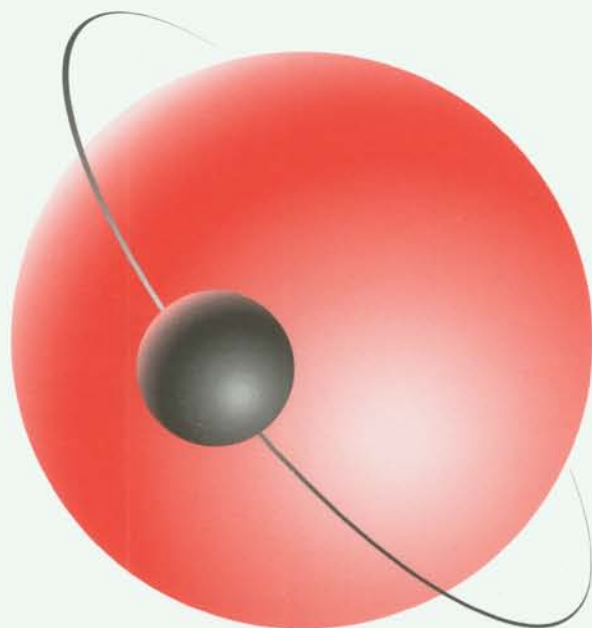


posh protection

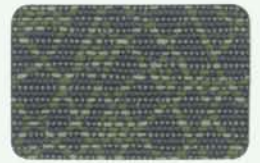


CRYPTON[®]
SUPER FABRICS

Douglass



Lewiston Ginger Teal



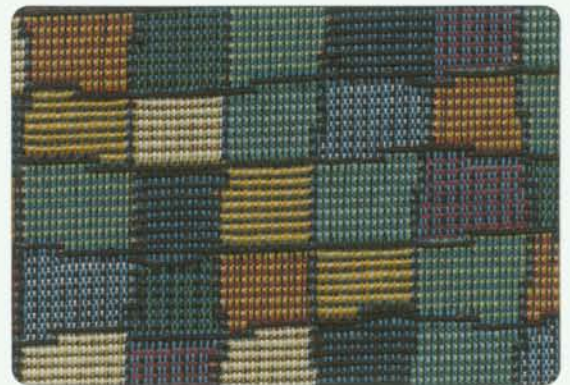
Reilly Blue



Marietta Bronze



Trent Sandlewood



Arcade Teal



Schultz Dark Blue



Trent Mariner



Myles Indigo



Bennett Navy



Alexa Sapphire



Marietta Willow



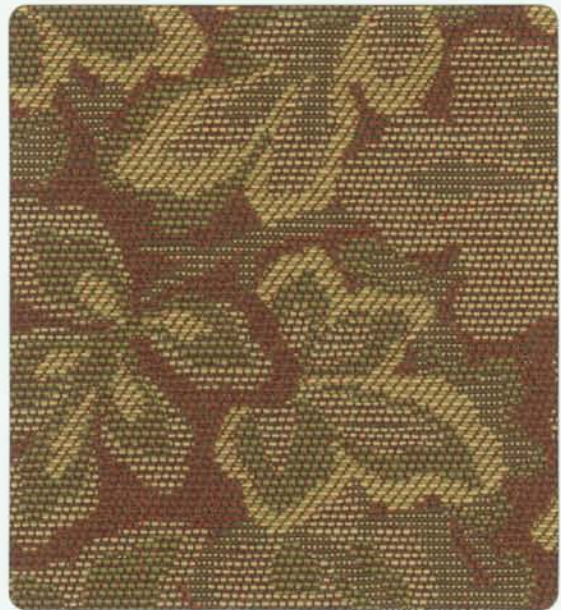
Powell Clay



Myles Tarragon



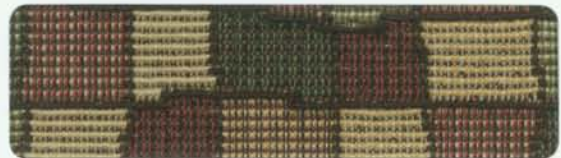
Trent Sprig



Chapman Autumn



Chelmsford Moss



Arcade Basil



Russell Mallard



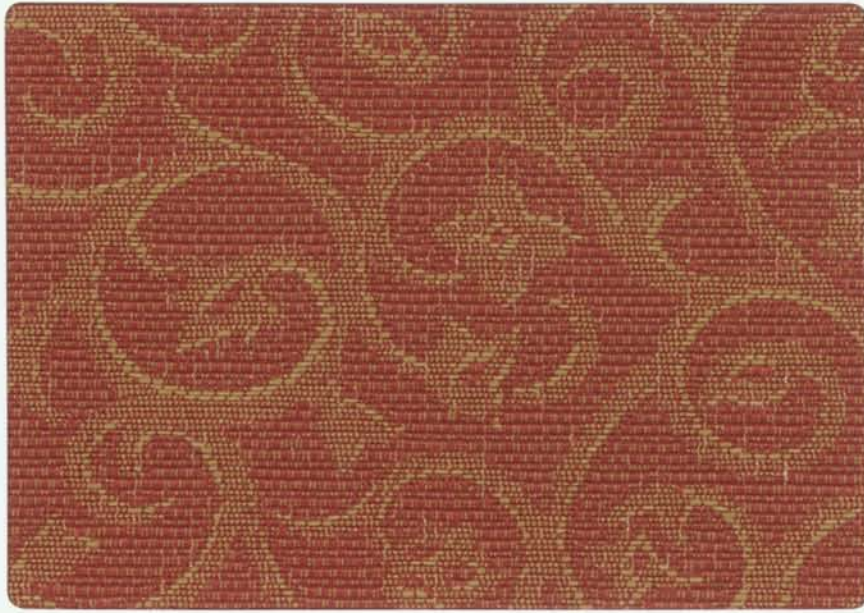
Bennett Pine

DISCONTINUED



Schultz Forest

DISCONTINUED



Willamette Crimson



Bennett Scarlet



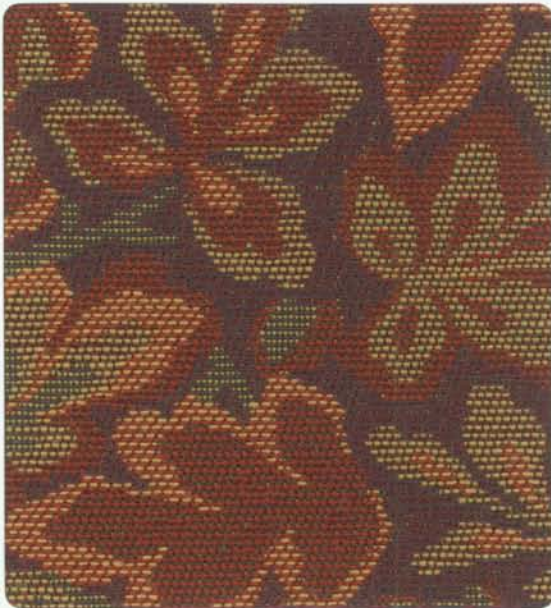
Marietta Apple



Trent Garnet



Chelmsford Aubergine



Chapman Fiesta



Trent Cranberry



Myles Sage



Powell Burgundy



Russell Mulberry

Specifications

Pattern	Content	Weight	Width	Abrasion ASTM D 4157 (Cotton Duck)	Light- Fastness ASTM D 3597	Seam Slippage ASTM D 4034	Tensile Strength ASTM D 5034	Repeat
Alexa	52% Polyester 48% Acrylic	15.24 oz. per linear yd.	54"	60,000 Double Rubs	40 Hours Class 4	W-134.0 lbs. F-99.0 lbs.	W-223.0 lbs. F-139.0 lbs.	H-6 1/2" V-6 1/2"
Arcade	52% Polyester 48% Acrylic	17.71 oz. per linear yd.	54"	60,000 Double Rubs	40 Hours Class 4	W-135.0 lbs. F-151.0 lbs.	W-242.0 lbs. F-251.0 lbs.	H-13 1/2" V-5 1/2"
Bennett	54% Acrylic 46% Polyester	17.30 oz. per linear yd.	54"	60,000 Double Rubs	40 Hours Class 4	W-120.6 lbs. F-93.6 lbs.	W-218.8 lbs. F-203.5 lbs.	H-0 V-0
Chapman	60% Rayon 40% Polyester	16.65 oz. per linear yd.	54"	50,000 Double Rubs	40 Hours Class 4	W-75.0 lbs. F-75.0 lbs.	W-273.3 lbs. F-173.3 lbs.	H-13 1/2" V-6 1/2"
Chelmsford	56% Rayon 44% Polyester	15.28 oz. per linear yd.	54"	50,000 Double Rubs	40 Hours Class 4	W-75.0 lbs. F-75.0 lbs.	W-261.3 lbs. F-181.3 lbs.	H-6 1/2" V-10 1/2"
Lewiston	60% Rayon 40% Polyester	16.66 oz. per linear yd.	54"	50,000 Double Rubs	40 Hours Class 4	W-58.3 lbs. F-56.3 lbs.	W-150.0 lbs. F-208.5 lbs.	H-13 1/2" V-17 1/2"
Marietta	60% Rayon 40% Polyester	16.66 oz. per linear yd.	54"	50,000 Double Rubs	40 Hours Class 4	W-75.0 lbs. F-75.0 lbs.	W-265.3 lbs. F-209.3 lbs.	H-3 1/2" V-3 1/2"
Myles	56% Cotton 44% Polyester	15.50 oz. per linear yd.	54"	50,000 Double Rubs	40 Hours Class 4	W-75.0 lbs. F-45.0 lbs.	W-264.0 lbs. F-86.0 lbs.	H-0 V- 1/2"
Powell	54% Rayon 46% Polyester	14.94 oz. per linear yd.	54"	50,000 Double Rubs	40 Hours Class 4	W-75.0 lbs. F-57.3 lbs.	W-171.0 lbs. F-119.0 lbs.	H-1 1/2" V-1 1/2"
Reilly	56% Cotton 44% Polyester	15.50 oz. per linear yd.	54"	50,000 Double Rubs	40 Hours Class 4	W-75.0 lbs. F-75.0 lbs.	W-254.0 lbs. F-88.0 lbs.	H-1 1/2" V-4 1/2"
Russell	60% Polyester 40% Acrylic	16.15 oz. per linear yd.	54"	60,000 Double Rubs	40 Hours Class 4	W-86.0 lbs. F-88.0 lbs.	W-247.0 lbs. F-250.0 lbs.	H-1 1/2" V-1 1/2"
Schultz	60% Rayon 40% Polyester	16.66 oz. per linear yd.	54"	50,000 Double Rubs	40 Hours Class 4	W-75.0 lbs. F-75.0 lbs.	W-284.0 lbs. F-190.7 lbs.	H-13 1/2" V-12 1/2"
Trent	51% Polyester 49% Rayon	13.67 oz. per linear yd.	54"	50,000 Double Rubs	40 Hours Class 4	W-70.1 lbs. F-47.7 lbs.	W-214.0 lbs. F-84.0 lbs.	H-9" V-0"
Willamette	56% Cotton 44% Polyester	15.50 oz. per linear yd.	54"	50,000 Double Rubs	40 Hours Class 4	W-75.0 lbs. F-64.0 lbs.	W-266.7 lbs. F-81.3 lbs.	H-6 1/2" V-6 1/2"

FIRE RESISTANCE

UFAC Fabric Classification
NFPA 260
California 117, Section E

Class 1 Does not ignite
Pass
Pass

Others: Crypton® FR is available to meet CRIB 5, Boston, New York, IMO Res. A. 652 (16) and California 133. (California 133 is a composite test that must be tested with proper construction for each component product.)

GENERAL CLEANING METHODS

Studies with ASCR show that nothing works better on Crypton® than a powdered enzyme detergent, such as Tide® or Cheer®, mixed with water. Be sure to rinse with a clean cloth and clear water. The fabric must be rinsed thoroughly, leaving no soap residue. Because Crypton® fabrics were designed for easy maintenance, the use of solvent-based cleaners is unnecessary. In fact, some heavy-duty solvents can damage the textile's fibers. To be safe, we recommend that you do not use solvents in the general maintenance of Crypton® fabrics. Diluted bleach (four parts water to one part bleach) can be used to disinfect Crypton®, but should be removed quickly and completely to avoid fading. Bleach that is not completely removed will eventually fade the fabric.

PATENTS

US patents 5,565,265; 5,747,392; 6,024,823; 6,165,920; 6,207,250; 6,251,210 and 6,492,001 and other US/Foreign patents pending. Crypton® is a registered trademark of Hi-Tex, Inc.



CRYPTON®
SUPER FABRICS

Douglass

Douglass Industries, Inc., 412 Boston Avenue, P.O. Box 701, Egg Harbor, NJ 08215

Sample Hotline: 800-950-3634 (24 hours)
Sample fax line: 609-804-0774
Samples e-mail: samples@dougind.com
Main: 609-965-6030

Customer Service phone: 800-950-3684
Customer Service fax line: 609-965-7271
Customer Service e-mail: service@dougind.com
visit our website at: www.dougind.com